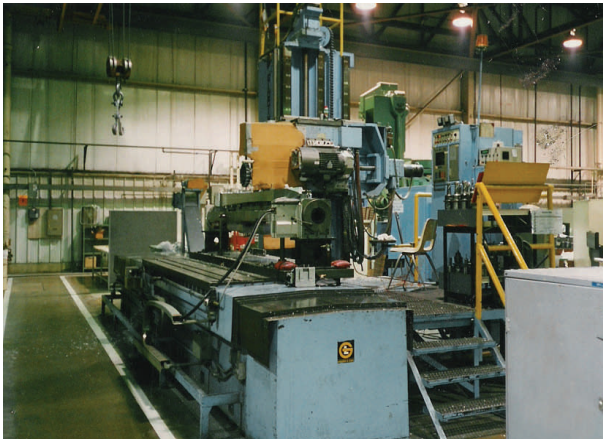


Facilities List

Milling – Horizontal

Giddings & Lewis

8" G&L CNC
capacity X=127", Y=72"
4" G&L/Readout
capacity X=74", Y=60", Z=40"
3" G&L/Readout
capacity X=48", Y=24", Z=36"



Milling – Vertical

CompuMills CNC

4500, New Delta 50 Control
capacity X=41", Y=30", Z=24"
4000, 5HP, ½ ton capacity

Bridgeports Series II Special,

CNC Proto Track
capacity X=12", Y=30"
Readout

Kearney & Trecker CNC Traveling Column Horizontal Machining Ctr 1999

2 Rotary Tables
4 Table Positions
capacity X=96", Y=60", Z=30"



Grinding

Blanchard #18

capacity 30" Dia

Brown & Sharpe

12" X 36" Cylindrical
Covel 6" X 18" Surface

Engineering

Mechanical, Electrical, Controls
Automation, Robotics

Turning – Horizontal

Jones & Lamson CNC

#7A Turret Lathe
capacity 18" Diameter

EZ Path S Lathe

capacity 17" X 40"
American Pacemaker Lathe
capacity 18" X 48"
Reed Prentice Lathe 16" X 36"



Turning – Vertical

Ikegai VT110 Fanuc CNC

capacity 50" Diameter

Bullard Cutmaster

capacity 36"

Drilling

Leland Gifford Multi Spindle
Powermatic Single Spindle
American 3' Radial

"If you can break it, we can make it. If you can draft it, we can craft it!"

Since 1976 10,000 Sq. Ft. Modern Facility located 1 mile from Rte 12/190 Interchange

Facilities List, continued

Cutting

DoAll

- 12" X 12" Horizontal Band Saw
- 16" Vertical Band Saw

Welding

TIG, 250 Amp MIG, Oxy-acetylene

Special

10 Ton Overhead Bay Crane



With over 33 years of excellence, Sigler Machine Company, a family owned and operated business, has the capabilities and experience to meet all of your needs for engineering, precision machining, machine building and part repairs.

We are a full service machining facility working with all types of steel, stainless, aluminum, brass, bronze, cast iron and plastic. No job is too large or small – from ounces to tons or one to one thousand pieces. We have large capacity machines, skilled machinists, yet are small enough to work closely with each customer to solve engineering problems, all at affordable prices!

We would be pleased to have you join our customer base. Please call or fax us at 978-422-7868 to obtain a free quotation, or check out our web site at www.siglermachinecompany.com.



3 Northeast Boulevard

Sterling, MA 01564

Telephone: (978) 422-7868

Fax: (978) 422-8279

www.siglermachinecompany.com

